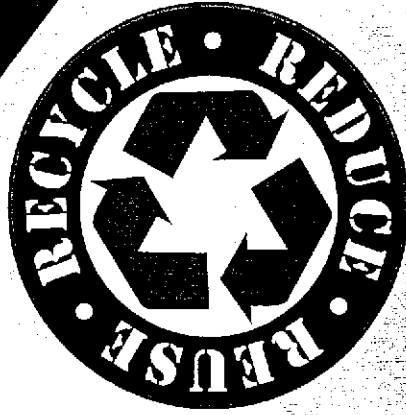


SAVE!
FOR FUTURE
REFERENCE

*These are tentative dates assuming the events can be safely held
under any emergency orders or advisories in effect at that time.
www.co.chippewa.wi.us/lcfm*



2020 Household Recycling Guide

***for
Chippewa County Residents***

*It's up to you!
Show your pride - Recycle!*

2020 - Your Contact for Local Recycling Programs

Municipality/Contact Person	Drop-Off Program	Curbside Program
Anson Gary Lazarz 715-382-4397		South of Hwy. O - Tuesday North of Hwy. O - Wednesday
Arthur Scot Smith 715-289-4688	25192 County Hwy. S 2nd Saturday 8-Noon	
Birch Creek Robin Stender 715-595-4996	25115 265th Avenue 2nd and 4th Saturday 9- Noon	
Bloomer Area* Tony Burgess 715-568-2811	407 26th Ave., Bloomer Monday & Friday 9-3, Wednesday 4-7, Saturday 8-Noon Gate Closes 15 min. prior	
Boyd Sandra Isaacs 715-667-3420		Every Friday
Cadott Sandy Buetow 715-289-4282		Every Monday
Chippewa Falls Chippewa County Recycling 715-726-7999		Every other week/ Varies by route
Cleveland Sue Jecevicus 715-288-6251	Town Hall - 20470 State Hwy. 64 Every Saturday 10-3	
Colburn Brad Hompe 715-644-5712	18237 327 th Street 1st & 3rd Saturday 10-2	
Cooks Valley Calvin Swartz 715-568-4281	Town Hall - 15751 40 th Street 1st & 3rd Tuesday, 4-8;- Last Saturday, 7-11	
Cornell Dave DeJongh 715-239-3710		Every Other Thursday
Delmar Connie Zimmerman 715-667-3463	Town Hall - 11528 320 th Street 1st & 3rd Saturday 8-Noon	
Eagle Point John Spaeth 715-864-0900	16306 165th Avenue 1st & 3rd Saturday 8-1	Individual Expense
Edson Donald Schesel 715-644-4943	Town Hall - 31595 Cty. Hwy. MM 1st Saturday: April - Sept. 7-Noon, October - March 8-Noon	
Estella Lisa Westman 715-312-0071	Town Hall - 22111 270 th Street 2nd & 4th Wednesday 2-6	
Goetz Tamee Foldy 715-828-0012	Recycling Center - 9451 State Hwy. 27 October - April: 2nd & 4th Saturday 9-Noon May - September: Every Saturday 9-Noon	
Hallie Area** Village Hall 715-726-2660 Ext: 1	3085 130 th Street May- October: Every Wednesday 4-7, 2nd & 4th Saturday 8-1 November - April: Every Wednesday 4-7, 2nd Saturday 8-1	Individual Expense
Howard Vern Schindler 715-874-5229	4052 County Hwy. B 2nd & Last Saturday 9-Noon	
Lafayette Town Hall 715-723-7692	Behind Lafayette Town Hall - 5765 197 th Street 1st & 3rd Thursday 4-7, 2nd & 4th Saturday 8-1	Individual Expense
Lake Holcombe Town Clerk 715-595-6586	Town Shop November - March: 2nd Saturday 9-Noon April - October: 2nd & 4th Saturday 9-Noon	
New Auburn Peggy Stanford 715-237-2223	Village Hall - 130 E. Elm Street Wednesday Noon-5; Saturday 8-Noon	
Ruby Cheryl Winchel 715-452-5636	26605 330 th Street • April - Oct. Every Wednesday 4-6 Year Round Every Saturday (except holidays) 10-2	
Sigel Lennis Ramseier 715-828-4454	Town Hall - 5511 Hwy. 27 1st & 3rd Saturday 9-2	
Stanley Cyndi Bergman 715-644-5758		Every Friday
Tilden Town Hall 715-288-6453 Steve Plendl 715-529-7438	Town Hall - 10790 100 th Ave. Every Saturday 8-Noon	
Wheaton Larry Tanner 715-874-6271 Roger Fagerland	2429 20 th Street (Elk Creek Rd.) April - September Wednesday 2:30-6:30, October - March Wednesday 1-5 Year Round Saturday 8-3	

* Bloomer Area includes City of Bloomer, Town of Bloomer, Town of Woodmohr, Town of Sampson, and Town of Auburn.

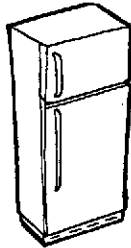
** Hallie Area includes Village of Lake Hallie and the Town of Hallie

Summer Collection

Northern WI State Fairgrounds

Wednesday, June 24 • 2 pm - 8 pm

- ◆ Appliance, Electronics, TV & Computer Collection
- ◆ Household Hazardous Waste Clean Sweep
- ◆ Scrap Metal Recycling



COVID-19

Please check our website for any date changes.
www.co.chippewa.wi.us/lcfm

Fall Collection

Northern WI State Fairgrounds

Saturday, October 24 • 8 am - Noon

- ◆ Appliance, Electronics, TV & Computer Collection
- ◆ Household Hazardous Waste Clean Sweep
- ◆ Scrap Metal Recycling

* For additional events, locations, dates and times see adjoining charts

Scrap Metal

Northern WI State Fairgrounds

225 Edward Street, Chippewa Falls

Wednesday, June 24

2 pm - 8 pm

Saturday, October 24

8 am - Noon

DO BRING

Metal pipes, parts, bikes, motors,
small metal plumbing fixtures,
pots, pans, utensils, exercise equipment,
gas grill (remove propane cylinder), etc.

Appliance Collection

The Appliance Collection provides residents the opportunity to recycle the following items for a fee.

Appliances contain hazardous materials such as mercury containing switches and temperature control devices, oil, PCB capacitors and refrigerants.

Wednesday, June 24

Chippewa Falls • 2 pm - 8 pm

Northern WI State Fairgrounds
225 Edward Street

Saturday, October 24

Chippewa Falls • 8 am - Noon

Northern WI State Fairgrounds
225 Edward Street



Appliance Fee Schedule

Chippewa Falls Site

Freon Containing Appliance \$15

Acceptable Items

Refrigerators	Washers
Freezers	Dryers
Dehumidifiers	Dishwashers
Furnaces	Disposers
Microwaves	Trash Compactors
Humidifiers	Water Heaters
Water Softeners	Stoves
Air Conditioners	

Electronics, TV & Computer Collection

Northern WI State Fairgrounds

225 Edward Street, Chippewa Falls

Wednesday, June 24

2 pm - 8 pm

Saturday, October 24

8 am - Noon

FREE RECYCLING

PCs, Laptop or LCD, Smoke Alarms, Co2 Detector
Printer, Scanner, Fax, Keyboards, Circuit Boards or Cables
VCR, DVD, Stereo, Typewriter, Cell Phones or Telephone

REDUCED RATES

TV (plastic or LCD) \$10-\$20

TV (Wood or projection) \$40

CRT Monitor \$5

Electronics contain valuable, reusable materials like gold, steel, silver, copper and glass. They also contain harmful materials like lead, mercury, cadmium and chemical flame retardants.

Recycling and reusing electronics protects the environment, conserves valuable raw materials and preserves landfill space.

COVID-19

Please check our website for any date changes.

www.co.chippewa.wi.us/lcfm



Did you know?

You can take your electronics and appliances to the following business during normal operation hours.

Call for rates.

- First Choice 715-833-2005
- Best Buy 715-833-0666



What Your Family Can Do To...

Glass Becomes...

Tile
Glass Bottles
Glass
Roadbed Material

Tin Becomes...

Appliances
Bookends

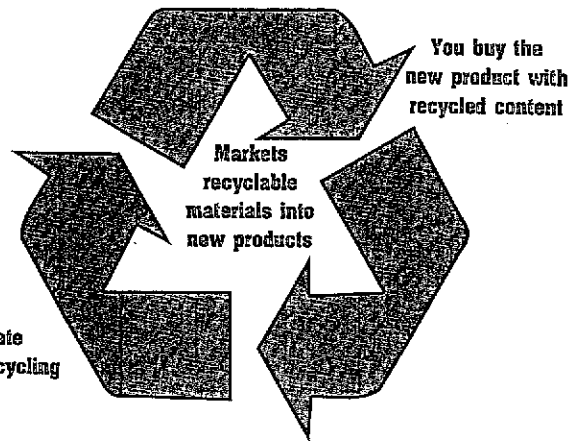
Paper Becomes...

Napkins
Paper
Envelopes
Cereal Boxes

Cardboard Becomes...

Fuel Pellets
Cardboard

Buy Recycled-Content Products!



Newspaper Becomes...

Insulation
Animal Bedding
Newsprint
Shingle Felt

Tires Become...

Hose
Entry Mat
Asphalt

Plastic Becomes...

Plastic Lumber
Carpet
Fabric
Garbage Bags
Bottles

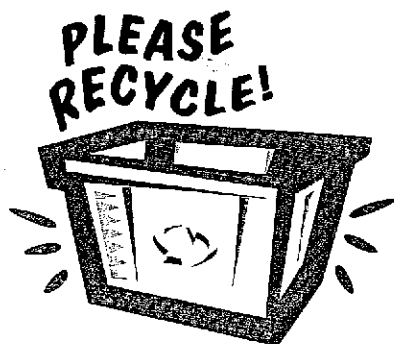
...Complete the Loop!

What To Recycle...

The following items must be separated from the trash and recycled:

Did You Know...

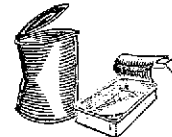
Recyclable items that are not separated from the trash end up in the landfill!



Aluminum Cans



Steel/Tin Cans



Office Paper, Newspapers & Phone Books

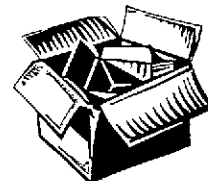


Magazines & Catalogs

- Remove plastic wrappers.

Corrugated Cardboard

- Flatten.



Glass Bottles & Jars

- Do not break.
- Food and beverage containers only.
- No window glass, light bulbs, mirrors, or other glass.

Plastic

- #1 - #2 plastic
- No motor oil containers, toys, or plastic wrap.



MEDICATION and DRUG DROP-OFF

Chippewa
County
Community
DRUG TASK FORCE

Get rid of your unwanted meds

Don't Flush it. Drop it.

MedReturn Box

Locations listed below:

- Bloomer Police Department
- Boyd Police Department
- Cadott Police Department
- Chippewa County Sheriff's Office
- Chippewa Falls Police Department
- Cornell Police Department
- Lake Hallie Police Department
- Stanley Police Department

Accepted Medications at All Locations

Tablets, capsules, over-the-counter medications, vitamins, sample medications, creams, ointments, lotions, patches, liquids in leakproof plastic containers, inhalers and prescription drugs used for ears, eyes, nose and throat.

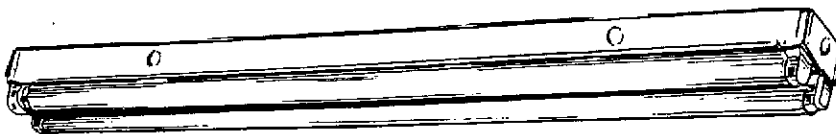
Unaccepted Medications

Needles (insulin or syringes), thermometers, blood or infectious waste, blood glucose monitors, lancets and medications from local businesses.



Organized by the Chippewa County Community DRUG TASK FORCE

Fluorescent Bulb Collection Program



Fluorescent light bulbs are an extremely cost effective and an energy efficient way to light your home or business. There is, however, one drawback; fluorescent bulbs contain mercury vapor. Mercury is a neurotoxin that when released into the environment contaminates our water and the aquatic food chain. This is what has caused the DNR to post fish consumption advisories on every lake in Wisconsin.

To prevent any more damage from being done, Chippewa County has teamed up with local hardware stores and recycling programs to provide a fluorescent bulb collection program. Residents and businesses can bring their used fluorescent bulbs to a convenient location, year round, for recycling at cost effective prices.

Chippewa Falls

Jacobson's Ace Hardware

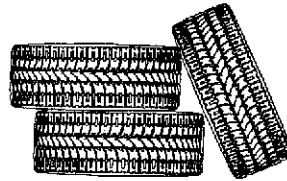
(Downtown): 715-861-2050

(Lake Wissota): 715-861-2055

NOTE: The new low-mercury bulbs (or green-tipped bulbs) and compact fluorescent bulbs, CFL, still contain mercury vapors and should be recycled. Landfills have banned ALL fluorescent bulbs.

Waste Tire Collection

Chippewa County is sponsoring a Waste Tire Collection Program for all Chippewa County residents, businesses, and government agencies. This program provides an outlet for waste tires and assembles large amounts to be transported to facilities where the tires are converted to tire derived fuel (TDF).



Lafayette Collection Dates

Located behind the Lafayette Town Hall, just south of County Hwy. X at 5765 - 197th Street.

Thursday, June 11 • 1 pm - 5 pm

Saturday, June 20 • 8 am - Noon

Thursday, July 9 • 1 pm - 5 pm

Thursday, July 23 • 1 pm - 5 pm

Thursday, Aug. 27 • 1 pm - 5 pm

Thursday, Sept. 10 • 1 pm - 5 pm

Thursday, Sept. 24 • 1 pm - 5 pm

Saturday, Oct. 3 • 8 am - Noon

Thursday, Oct. 8 • 1 pm - 5 pm

Cornell Collection Dates

Located at the Chippewa County Highway Shop at 20250 County Hwy. K, just south of Cornell.

Thursday, June 11 • 1 pm - 5 pm

Saturday, June 13 • 8 am - Noon

Saturday, Sept. 26 • 8 am - Noon

Thursday, Oct. 15 • 1 pm - 5 pm

Tire Fee Schedule

	Res/Gov	Business
Passenger (through 15")	\$3	\$4
with Rim	\$5	\$8
Passenger (16-17")	\$5	\$8
with Rim	\$8	\$12
Truck (18-19")	\$12	\$15
with Rim	\$14	\$18
Truck (20-22.5")	\$14	\$18
with Rim	\$16	\$20
Truck (over 22.5")	\$17	\$25
with Rim	\$20	\$30
Skid-Steer	\$12	\$15
Tractor (to 28")	\$20	\$25
with Rim	\$25	\$30
Tractor (over 28")	\$30	\$40
with Rim	\$35	\$50
Heavy Equipment (under 500 lbs.)	\$40	\$50
Heavy Equipment (500-700 lbs.)	\$70	\$80
Bulk Loads	\$285/ton	\$300/ton

Household Hazardous Waste Clean Sweep

Some household products may require special consideration in their use, storage, and disposal. Improper disposal of these products can cause fires, injuries to people and animals, and groundwater contamination. This is a free service to all Chippewa County residents.

Northern WI State Fairgrounds

225 Edward Street, Chippewa Falls

Wednesday, June 24

2 pm - 8 pm

Saturday, October 24

8 am - Noon

DO BRING

Oil/solvent-based paints
Heavy metal paints
Fluorescent bulbs*
Wood preservatives
Waste motor oil
Fuel mixtures, kerosene, fuel oil
Thinners, strippers, stains, varnish
Mercury and other heavy metals
Scrap Metal Recycling
1 lb. or 20 lb. Propane Cylinders

Antifreeze
Corrosives
Solvents
Poisons
Batteries
Pesticides
Aerosol cans
Lead acid batteries
Oil Filters*

*A small fee is charged.

DO NOT BRING

Latex paint
Business waste
Biological & infectious waste
Picric Acid

Radioactives
Explosives or ammunition
Pressurized cylinders

VSQG Clean Sweep (Very Small Quantity Generator)

Businesses and schools may recycle their hazardous chemicals at a low cost at a convenient location. This program operates on a fee-for-service basis.

Northern WI State Fairgrounds

225 Edward Street, Chippewa Falls

Tuesday, June 23

10:30 am - 1 pm

Thursday, October 22

10:30 am - 1 pm

Pre-registration is required.